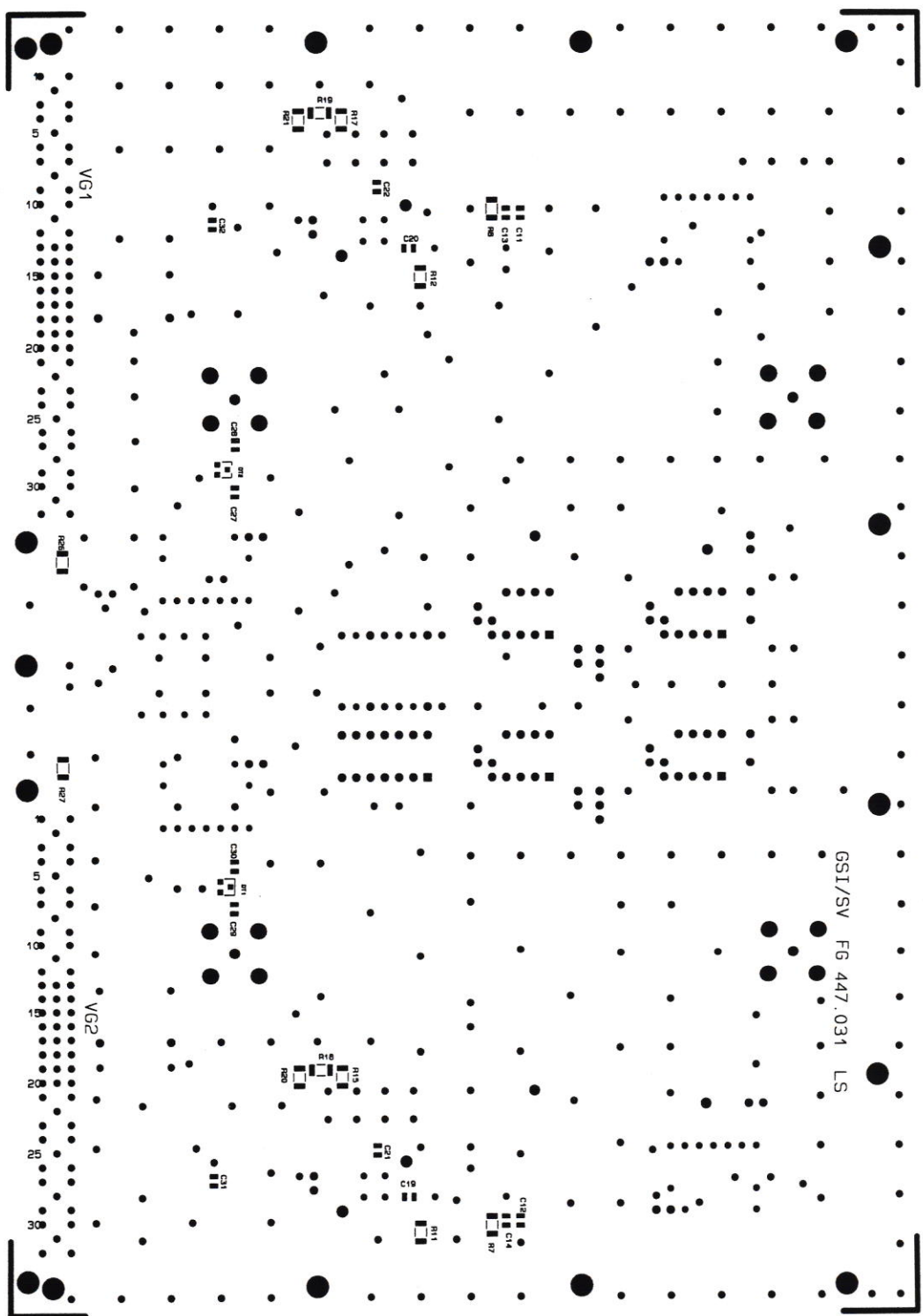
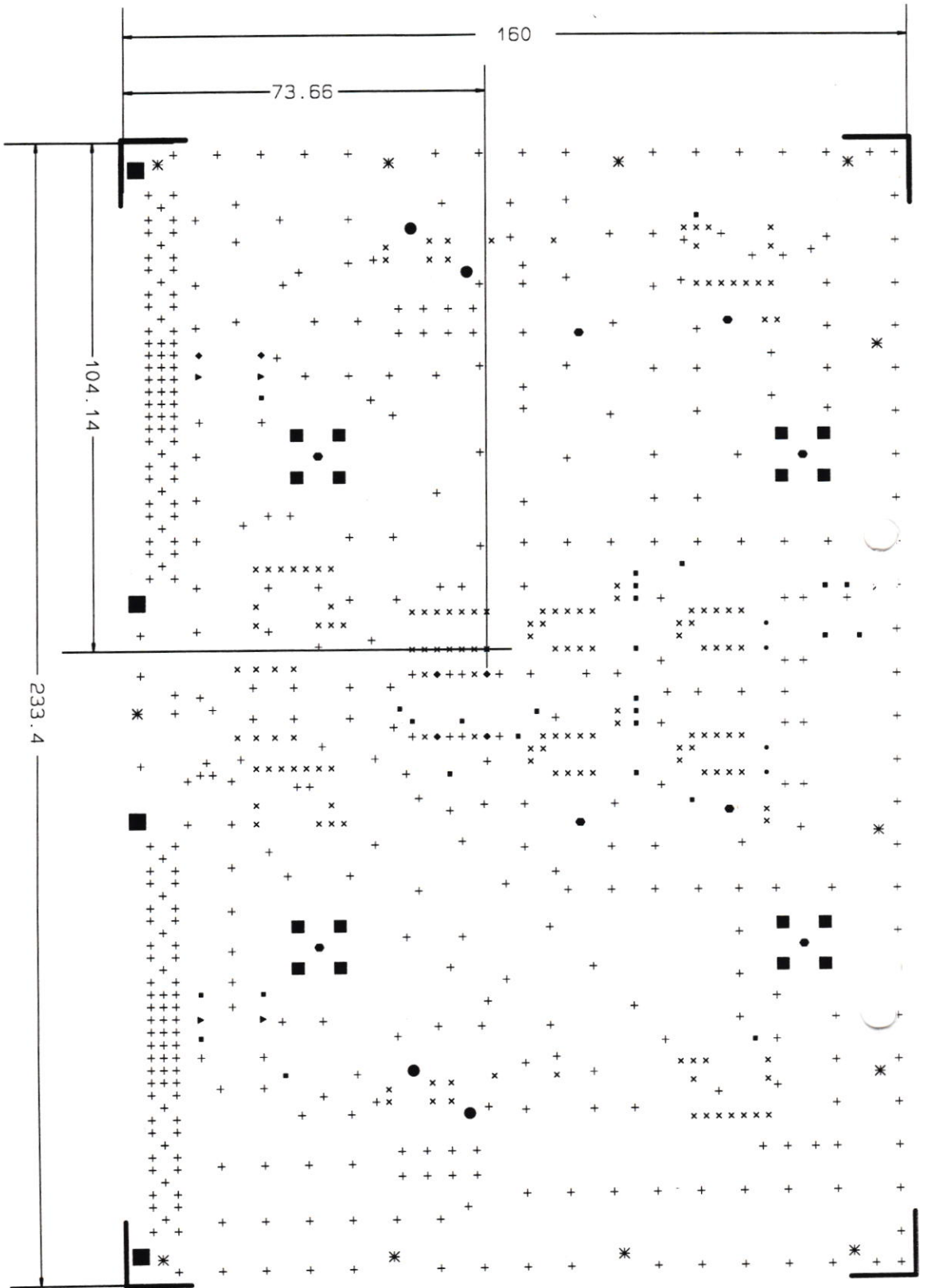


GS1/SV FG 447.031 LS



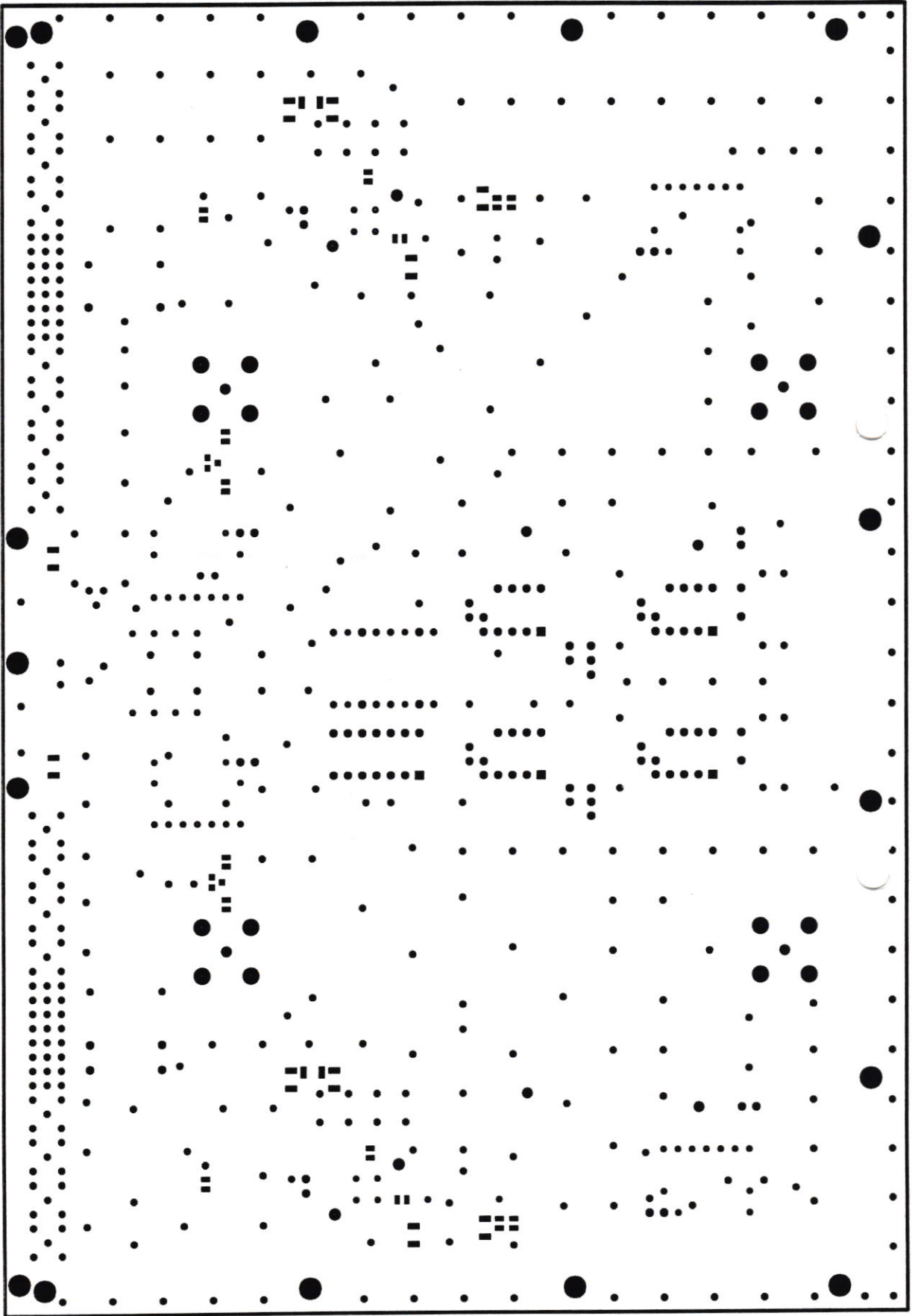
GS1 SUMDIFKON2 SUMDIF FG447.031
23-JUL-1993 GS1-SV



GSI SUMDIFBLS SUMDIF FG447.031
 5-MAY-1993 GSI-SV
 Bohrkontrollfilm mit Masszeichnung fuer die Platine SUMDIF

■	3.000	P /	4
✱	2.600	P /	13
■	2.000	P /	16
●	1.600	P /	4
●	1.400	P /	8
●	1.100	P /	6
▲	1.000	P /	4
+	0.900	P /	448
+	0.800	P /	150
+	0.700	P /	4
+	0.600	P /	27
+	0.025	P /	2

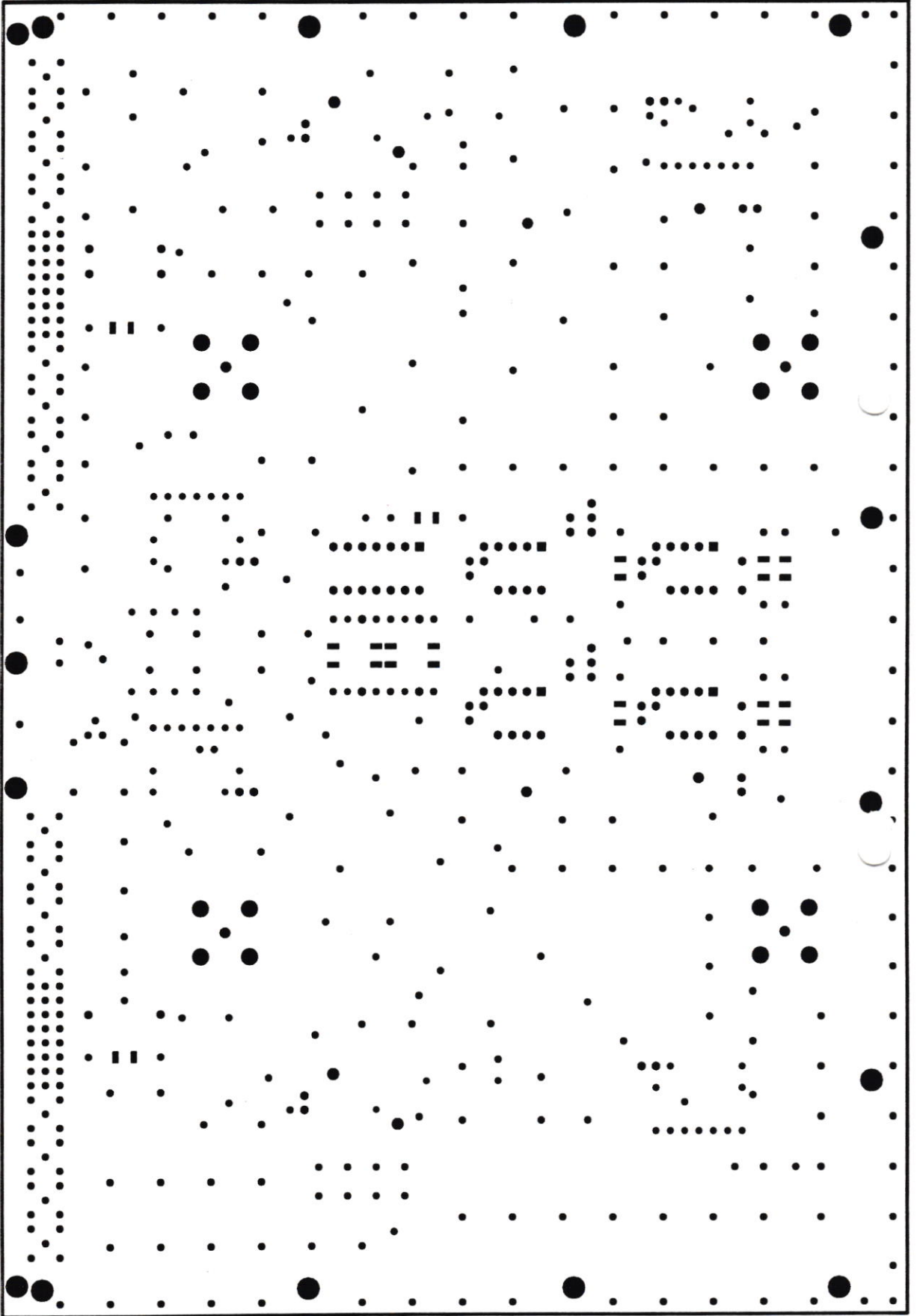




GSI
SUMDIFLSM2
5-MAY-1993 GSI-SV

SUMDIF

FG447.031



GSI
5-MAY-1993 GSI-SV
SUMDIFLSM1
SUMDIF
FG447.031

