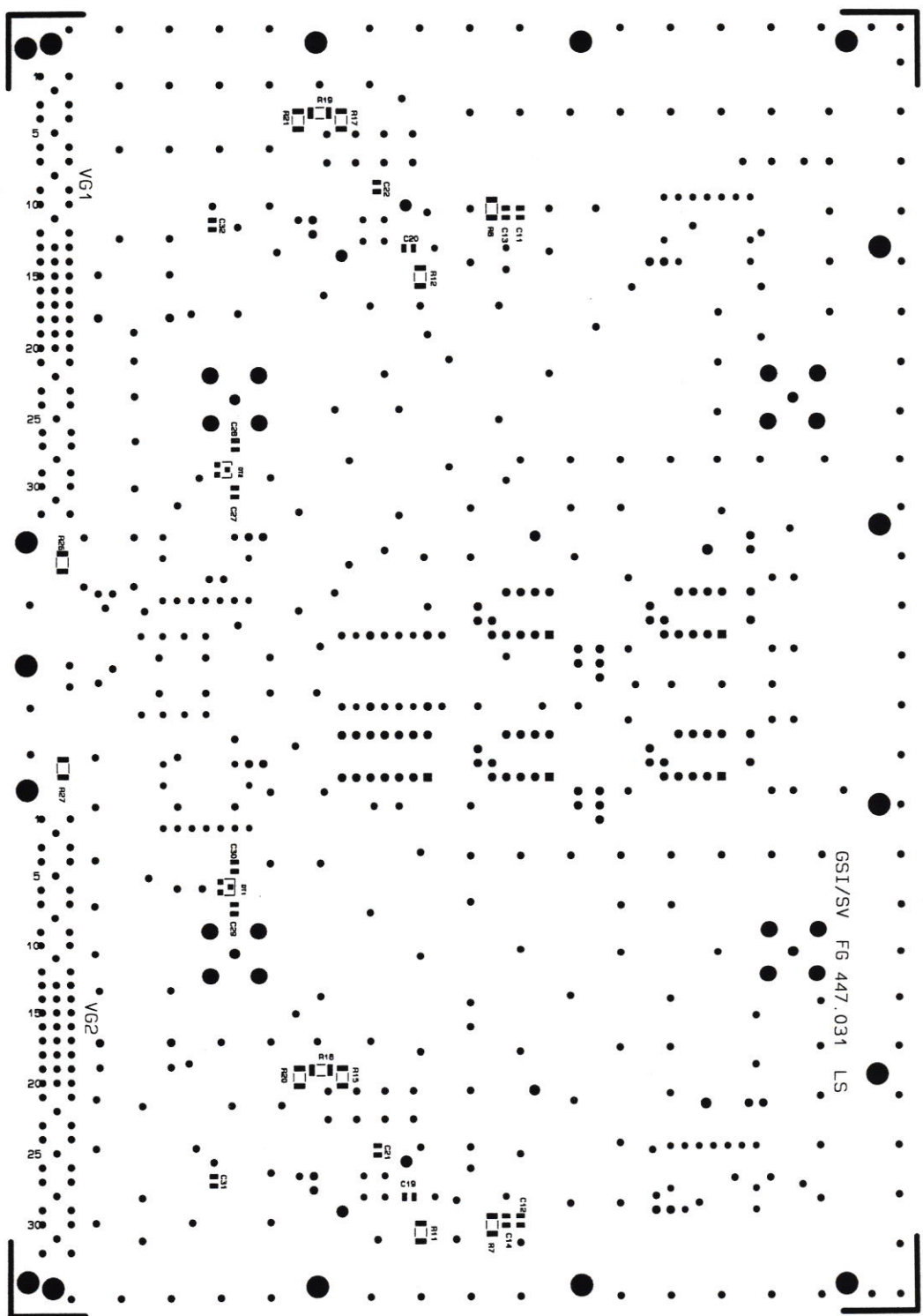
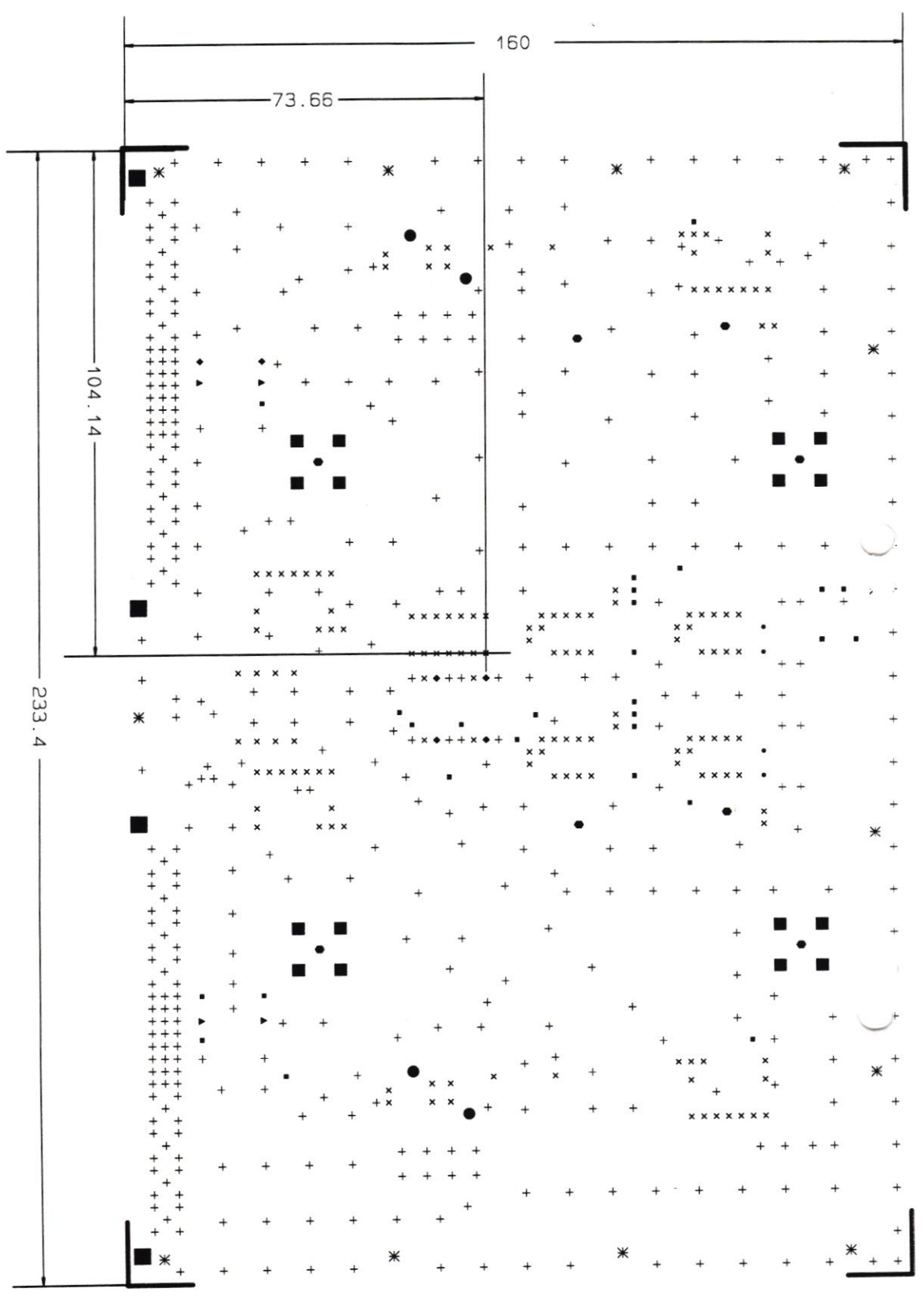


GS1/SV FG 447.031 LS



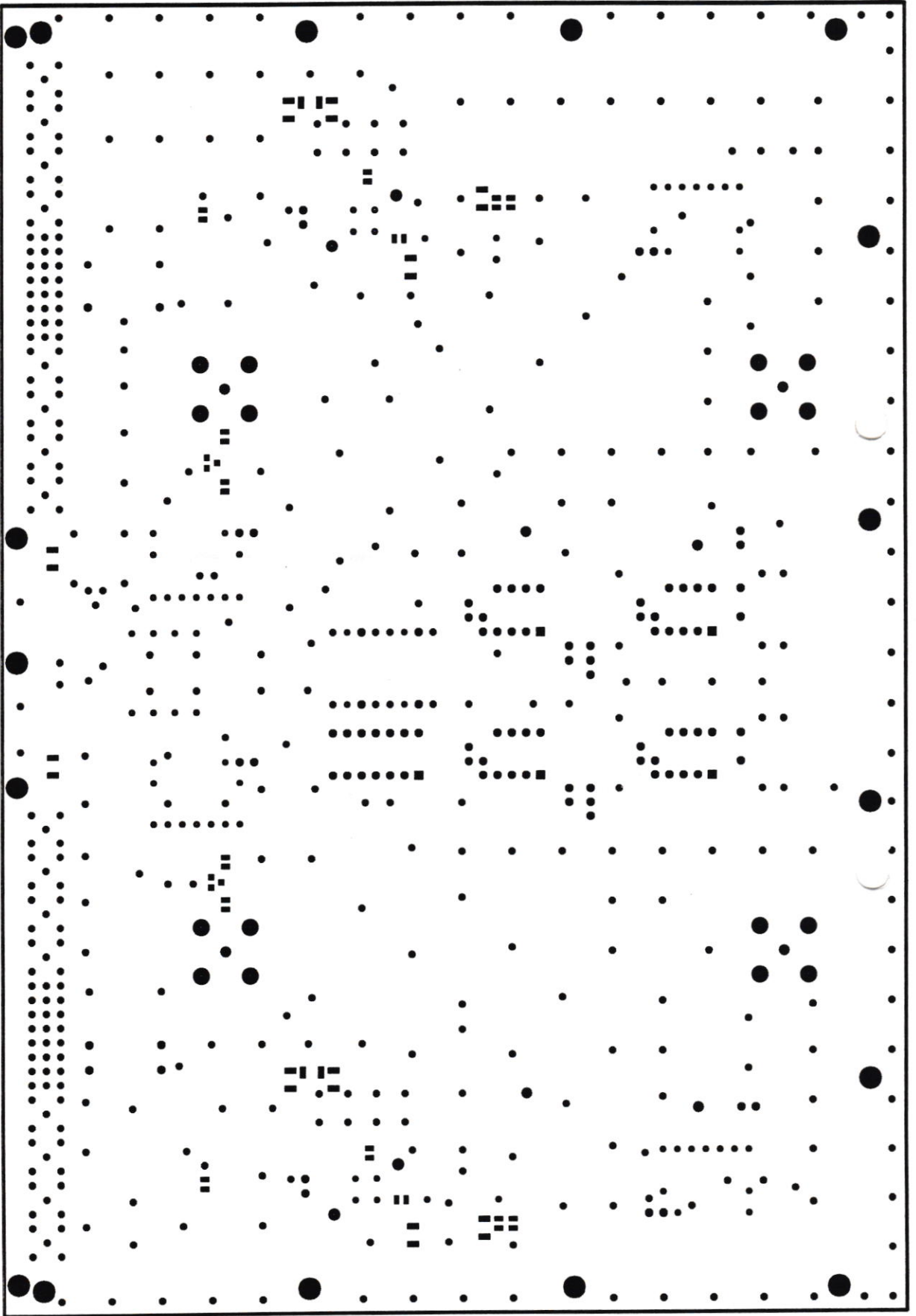
GS1 SUMDIFKON2 SUMDIF FG447.031
23-JUL-1993 GS1-SV

GSI SUMDIFBLS SUMDIF FG447.031
 5-MAY-1993 GSI-SV
 Bohrkontrollfilm mit Masszeichnung fuer die Platine SUMDIF



■	3.000	P /	4
✱	2.600	P /	13
■	2.000	P /	16
●	1.600	P /	4
●	1.400	P /	8
●	1.100	P /	6
▲	1.000	P /	4
+	0.900	P /	448
x	0.800	P /	150
•	0.700	P /	4
•	0.600	P /	27
•	0.025	P /	2

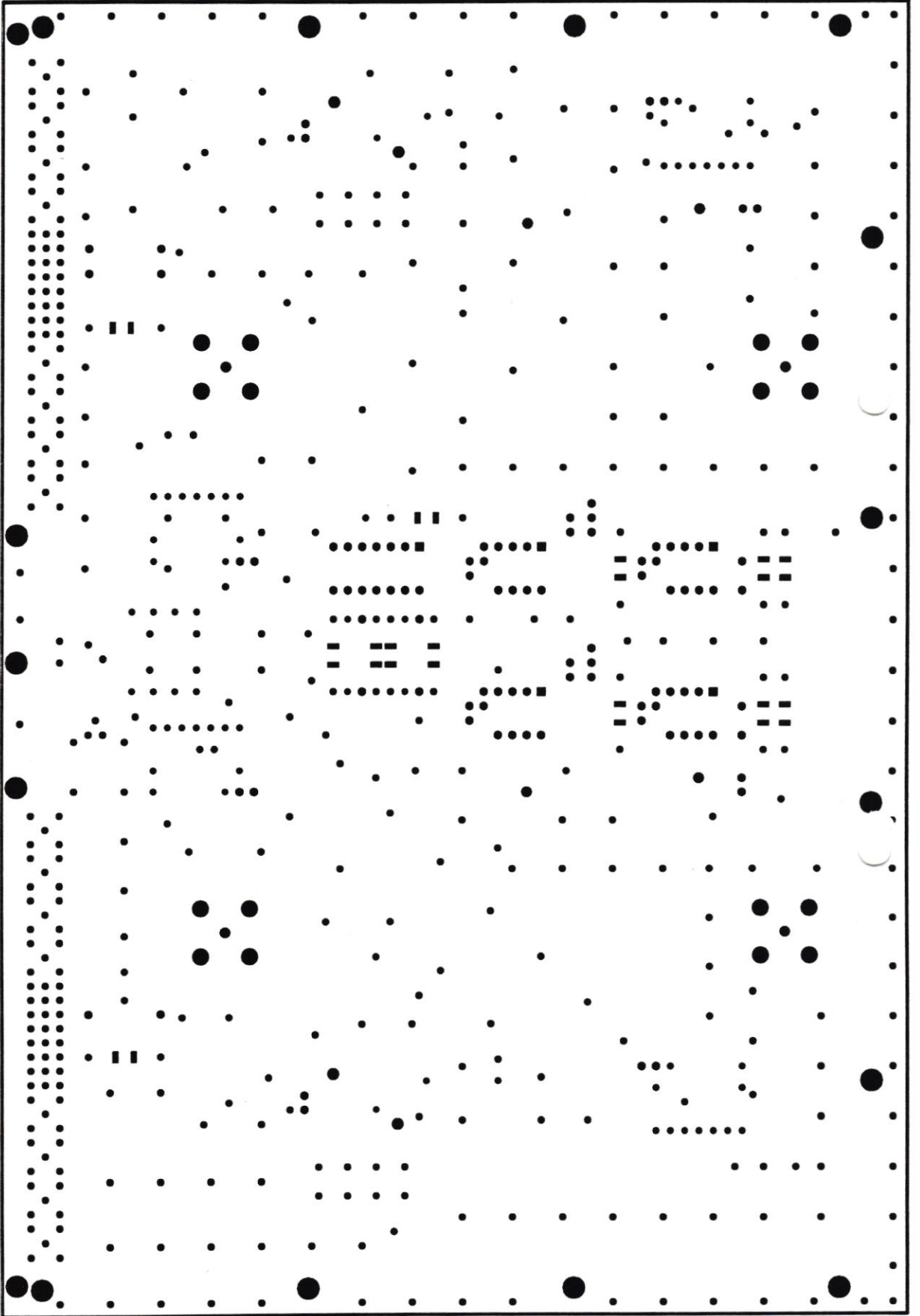




GSI
SUMDIFLSM2
5-MAY-1993 GSI-SV

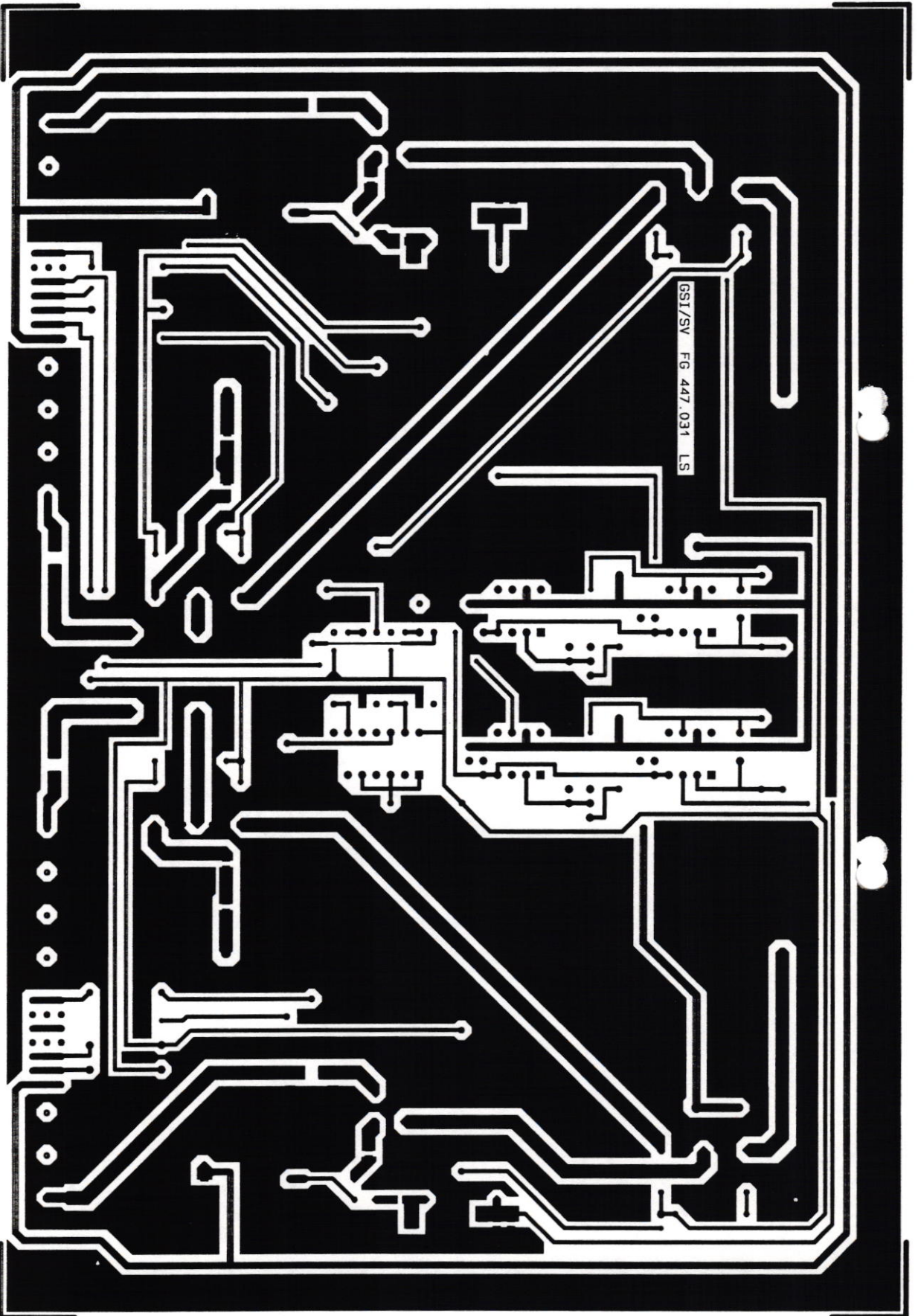
SUMDIF

FG447.031



GSI
5-MAY-1993 GSI-SV
SUMDIFLSM1
SUMDIF
FG447.031



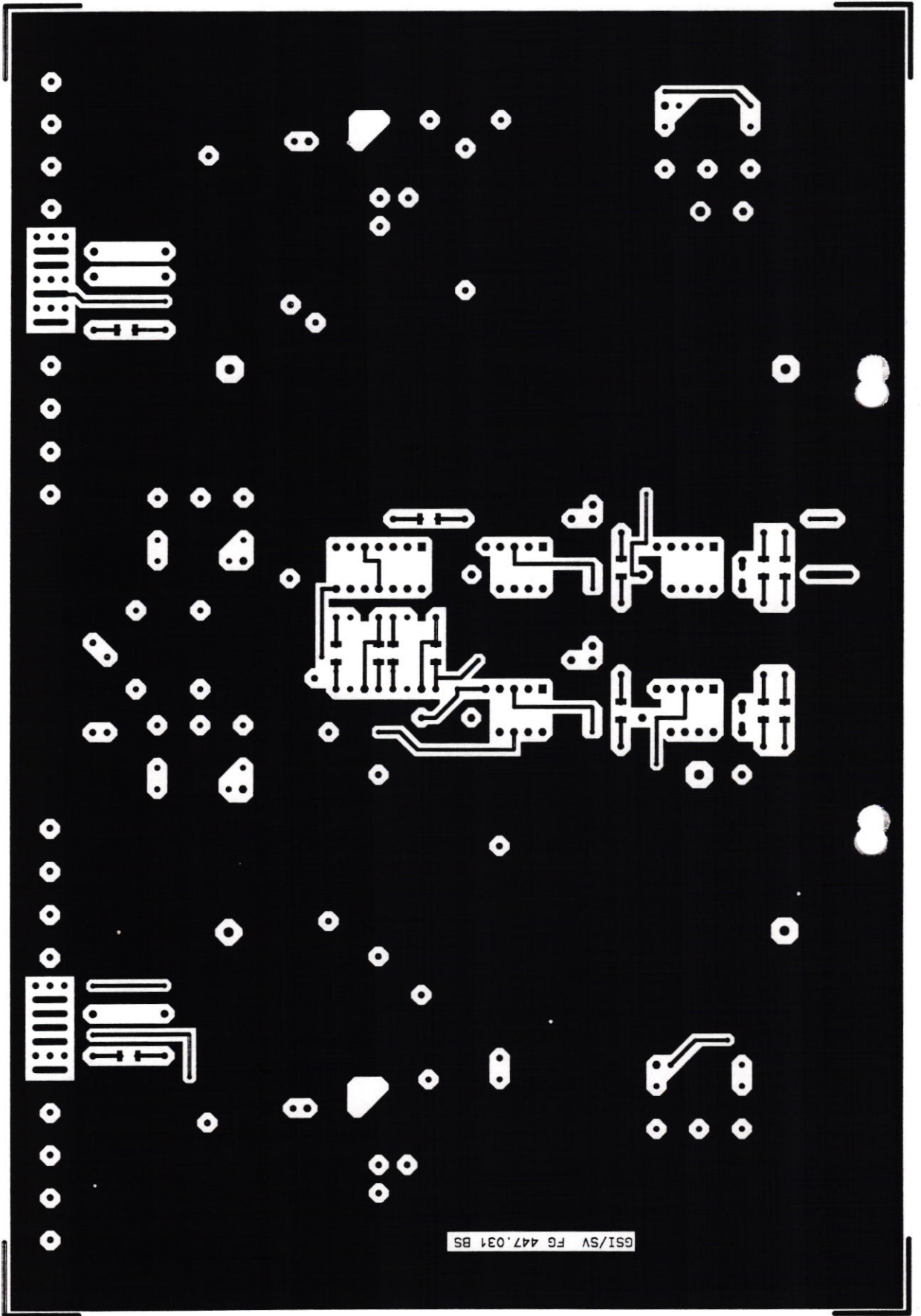


GSI/SV FG 447.031 LS

GSI SUMDIF2
5-MAY-1993 GSI-SV

SUMDIF

FG447.031



GSI
5-MAY-1993 GSI-SV
SUMDIF 1

SUMDIF

FG447.031

GSI/SV F6 447.031 BS



E L E K T R . S T U E C K L I S T E

*RM: 1 EINHEIT = 2.54MM

ST.	BAUTEIL-BEZEICHNUNG	WERT/TYP	RM	HERSTELLER	LG-NR.	BEMERKUNGEN
3	R1,R2,R10	10K				CHIP-WIDERSTAND/KOHLE 1/10W 5%
4	R15,R17,R20,R21	150R				CHIP-WIDERSTAND/KOHLE 1/10W 5%
2	R24,R25	1K				CHIP-WIDERSTAND/KOHLE 1/10W 5%
2	R5,R6	22K				CHIP-WIDERSTAND/KOHLE 1/10W 5%
2	R13,R16	2K4				CHIP-WIDERSTAND/KOHLE 1/10W 5%
2	R7,R8	2K7				CHIP-WIDERSTAND/KOHLE 1/10W 5%
2	R18,R19	36R				CHIP-WIDERSTAND/KOHLE 1/10W 5%
2	R11,R12	51R				CHIP-WIDERSTAND/KOHLE 1/10W 5%
2	R9,R14	5K1				CHIP-WIDERSTAND/KOHLE 1/10W 5%
2	R3,R4	91K				GEPOLSERTES HF-RELAIS 5V/40MA
4	RL1,RL2,RL3,RL4	RK1-5VJ		SDS		KOAXIALKONTAKT, NR.: 45K 201-400 H3
2	WINKELKUPPLER			ROSENBERGER		MESSERLEISTE STV-M 24/8-M-abc, NR.: 593 817
2	VG1,VG2	ST24-8P		ERNI		+15V VERSTAERKER 30dB
2	VEROPINS	BO12			16 083	
1	LEITERPLATTE	FG447.031				BEST.-NR.: FK6-1-8-3-N-1
1	FRAESKASSETTE	6HE/8TE		MTS		CADMIERT
1	FRONTPLATTE	6HE/8TE		SCHROFF		GRAVIERT (CONTROL)
1	FRONTPLATTENGRIF	8TE		SCHROFF		
4	MÜTTERN	M2,5			62 545	BEF. VG-LEISTE
4	ZYLINDERKOPFSCHRAUBEN	M2,5X10			62 440	BEF. VG-LEISTE
12	ZYLINDERKOPFSCHRAUBEN	M2X4				BEFESTIGUNG PLATINE IN GEHAUSE (CADMIERT)
16	ZYLINDERKOPFSCHRAUBEN	M2X6				MESSING, BEF. WINKEL CHASSI-STECKER AUF PLATINE
16	MÜTTERN	M2				MESSING, BEF. WINKEL CHASSI-STECKER AUF PLATINE
32	ZAHNSCHREIBEN	M2				MESSING, BEF. WINKEL CHASSI-STECKER AUF PLATINE

GSI DARMSTADT BEZ.: NUMMER: BEARB.: DATUM BLATT
 SUMDIF FG447.031 GSI-SV 23.JUL.1993 2 VON 2

E L E K T R . S T U E C K L I S T E

*RM: 1 EINHEIT = 2.54MM

ST.	BAUTEIL-BEZEICHNUNG	WERT/TYP	RM	HERSTELLER	IG-NR.	BEMERKUNGEN
1	IC-SOCKEL	14-POLIG			13 322	DIP14 ZUM LOETEN
4	IC-SOCKEL	8-POLIG			13 137	DIP8 ZUM LOETEN
14	C13, C14, C19, C20, C21, C22, C27	100N				CHIP-KONDENSATOR 0805
	C28, C29, C30, C31, C32, CK1, CK2					
20	C1, C2, C3, C4, C5, C6, C7, C8, C9	100N	1	UNION CARB	11 096	Union Carbide C320C104K1R5CA stehend Vielschicht-K
	C10, C15, C16, C17, C18, C23, C24					
	C25, C26, C35, C36					
2	C11, C12	1N				CHIP-KONDENSATOR 0805
2	D5, D7	1N4007	5		13 002	DIODE 1N4007, GEH. A23F, RM=12.7MM
6	D1, D2, D6, D8, D9, D10	1N4151	5		13 001	DIODE 1N4151, RM=5
2	D3, D4	BAT 54	5			DIODE BAT41, RM=5
2	DT1, DT2	BAS40-04		SIEMENS		SILICIUM-SCHOTTKY-DIODE
2	WINKELBUCHSE	AU-1054		SUHNER		WINKEL CHASSI-STECKER 500HM, NR.: 185MA 50-0-1/111
2	HF1, HF2	HPD-462		MITEQ		HF-VERSTAERKER, BESTELLT BEI FA. PARZICH
2	HF3, HF4	HH-106		AVANTERK		HF-VERSTAERKER
2	MONTAGEMATERIAL	PDC-10-1		AVANTERK		ACCESSORY PACK, NR.: 330-006756-001
1	HF7	74LS04		ANZAC		SUM/DIFF HYBRID
2	HF5, HF6	LF351		IE		HF-ABSCHWAECHE
1	IC5	14UH			13-358	6 INVERTER
4	IC1, IC2, IC3, IC4	5K			13 154	OPERATIONSVERSTAERKER LF351
4	IN1, IN2, IN3, IN4	OR	6		12 101	INDUKTIVITAET 14UH RM=15.24MM
2	P1, P2	OR			10 806	POTI-BECKMAN 66WR- 5K/0.10W/5%
2	R26, R27	OR				CHIP-WIDERSTAND/KOEHLE 1/10W 5%
11	R22, R23 und alle Bruecken	OR	5			WIDERSTAND OR

GS1
DARMSTADT

BEZ.:
SUMDIF

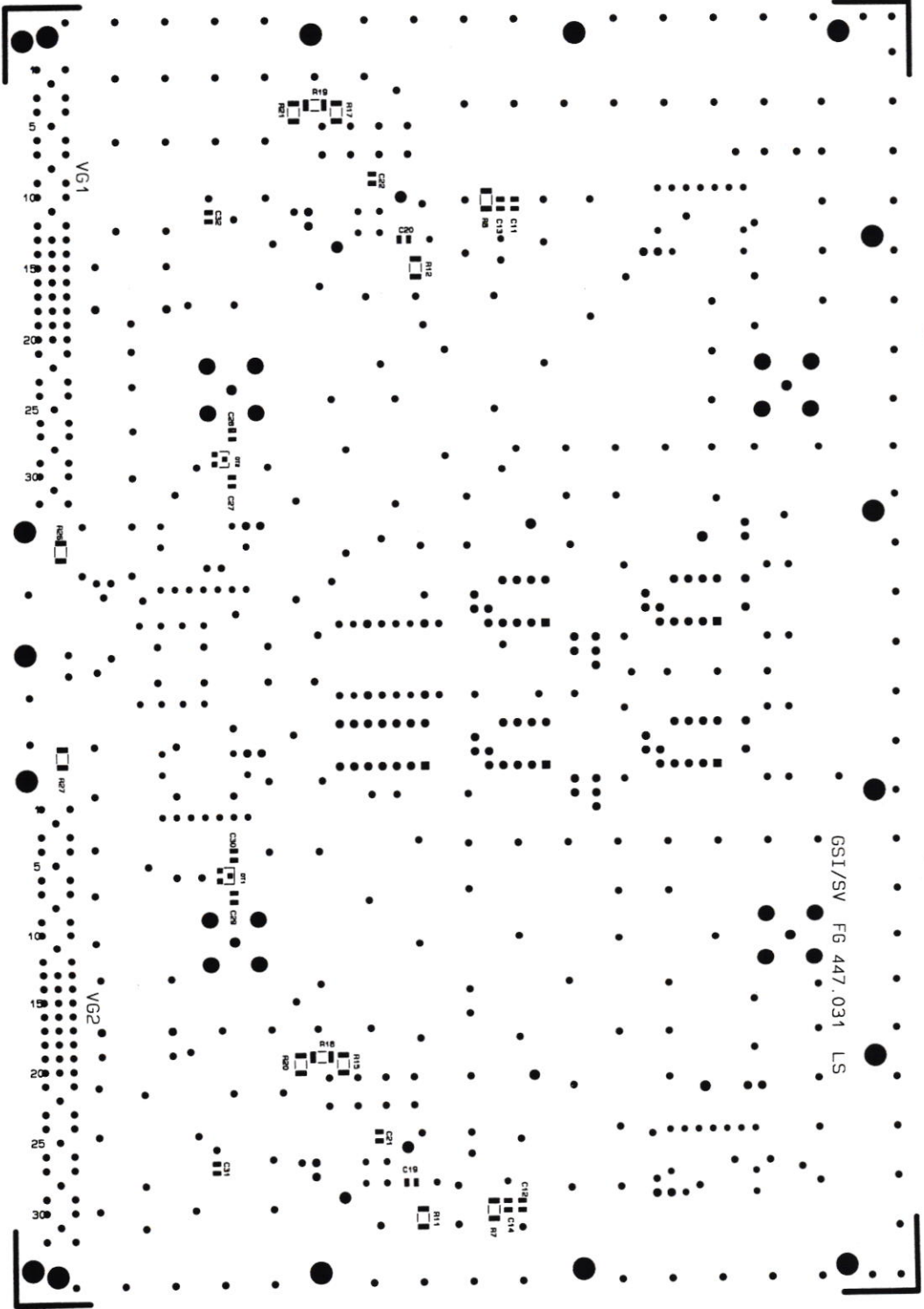
NUMMER:
FG447.031

BEARB.:
GS1-SV

DATUM
23. JUL. 1993

BLATT
1 VON 2

GSI/SV FG 447.031 LS



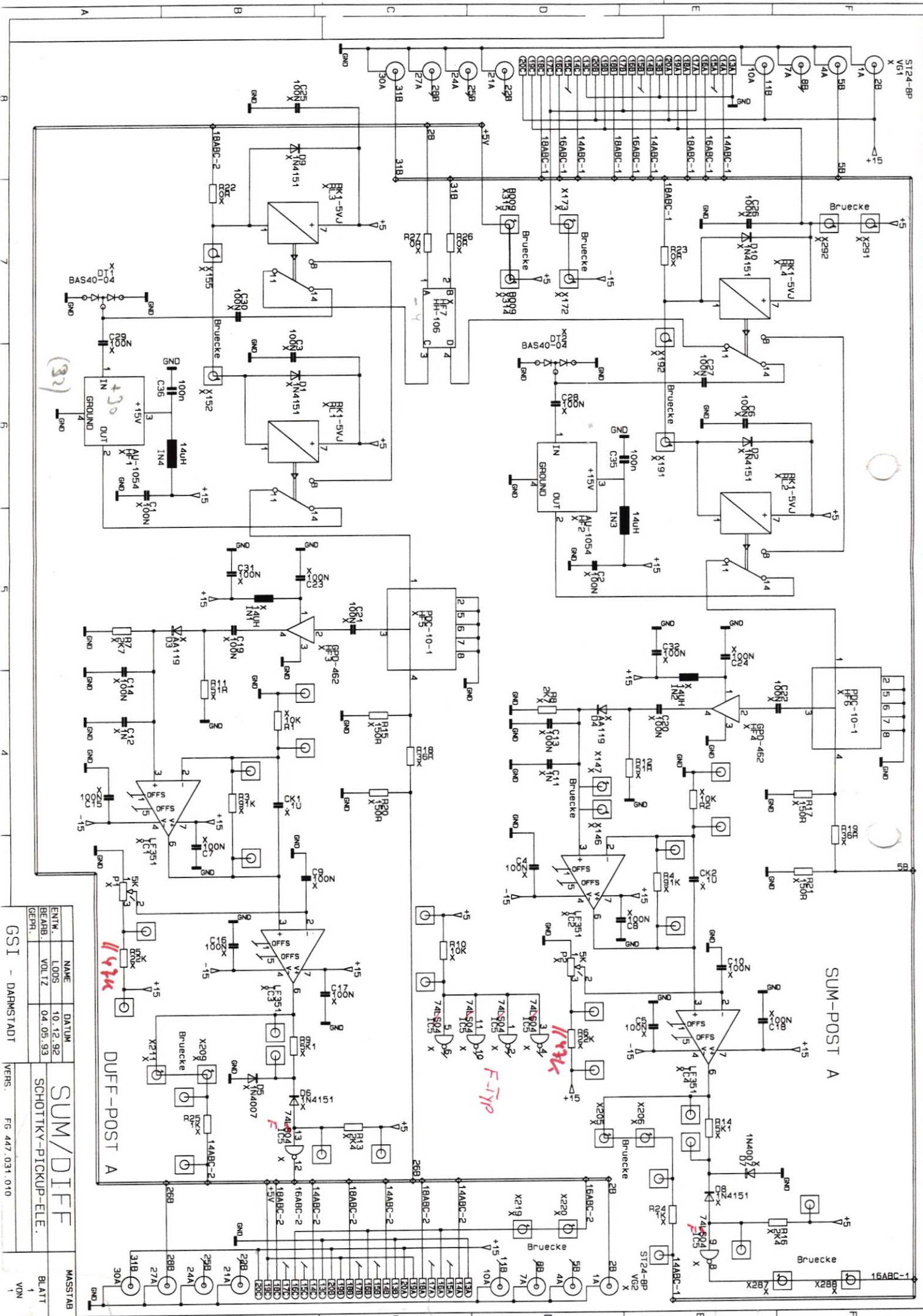
GSI SUMDIFKON2 SUMDIF FG447.031
 23-JUL-1993 GSI-SV

C

C

11.11.11

11.11.11



NAME	DATUM	MASSTAB
SUM/DIFF	10.12.92	1
ENTM.	LOOS	BLATT
BEARB.	VOLTZ	1
GEPR.	04.05.93	VON
SCHOTTKY-PICKUP-ELE.		

GSI - DARMSTADT VERS. FG 447.031.010

Prüfung MC

-12

11 - 12

Sum / Diff. Output

Bo. 060-

13 \rightarrow T
 14 \rightarrow Que.
 15 \rightarrow Nr
 16 \rightarrow (1009/8)
 17 \rightarrow ~~MSC~~
 18 \rightarrow Relais
 19 \rightarrow +5V
 20 \rightarrow +15V

7 - 25V



Out

IN (B)
 (Σ)

Bo. 060-

13 \rightarrow T
 14 \rightarrow Que.
 15 \rightarrow MC
 16 \rightarrow (1009/12)
 17 \rightarrow ~~MSC NC~~
 18 \rightarrow Relais
 19 \rightarrow +5V
 20 \rightarrow +15V



IN (A)
 (Δ)

Out
 (Δ)

