

Windows 7 LabView 8.6.1 AVT Camera BeamView Installation Guide

Rainer Haseitl, Version 1.1

The installation of LabVIEW under Windows 7 is DIFFERENT than the installation on Windows XP. Do not use another version than LabVIEW 8.6.1!

When the LabView CD is inserted, the AutoPlay Feature starts an installer.

Close this installer!

DO NOT USE THIS AUTOSTART "OVERALL" INSTALLER.

The separate LabView components have to be installed separately!

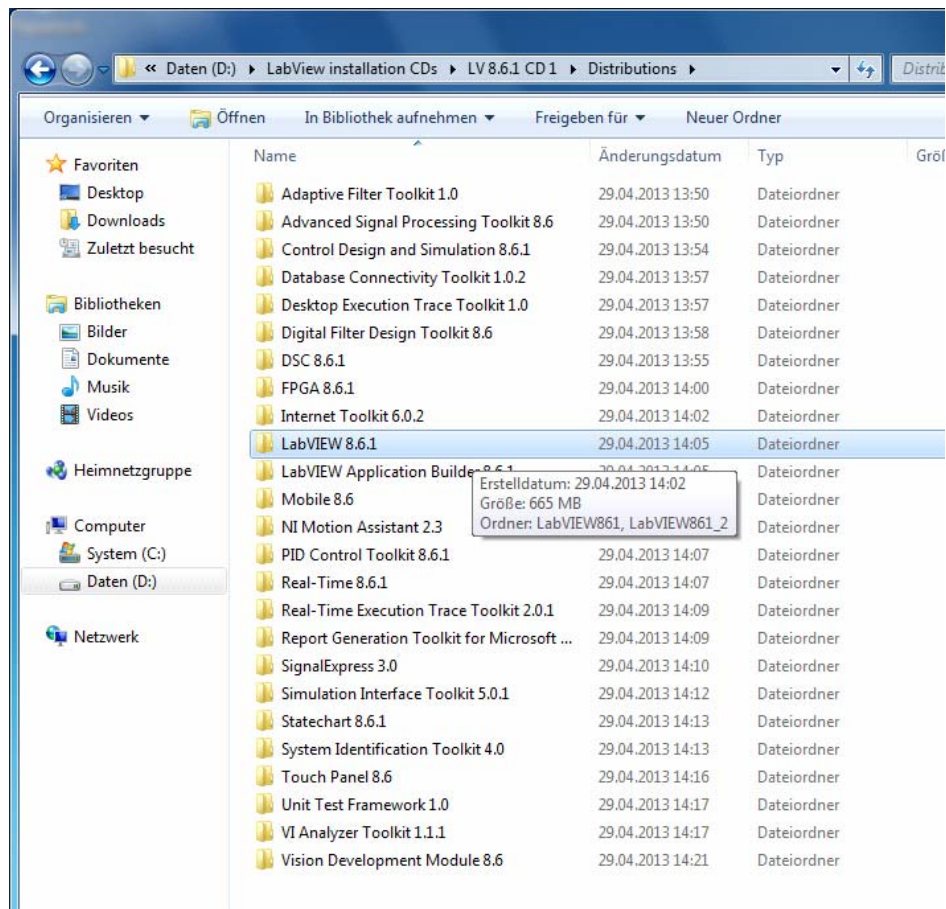
The whole installation takes about 3-4 hours with some reboots.

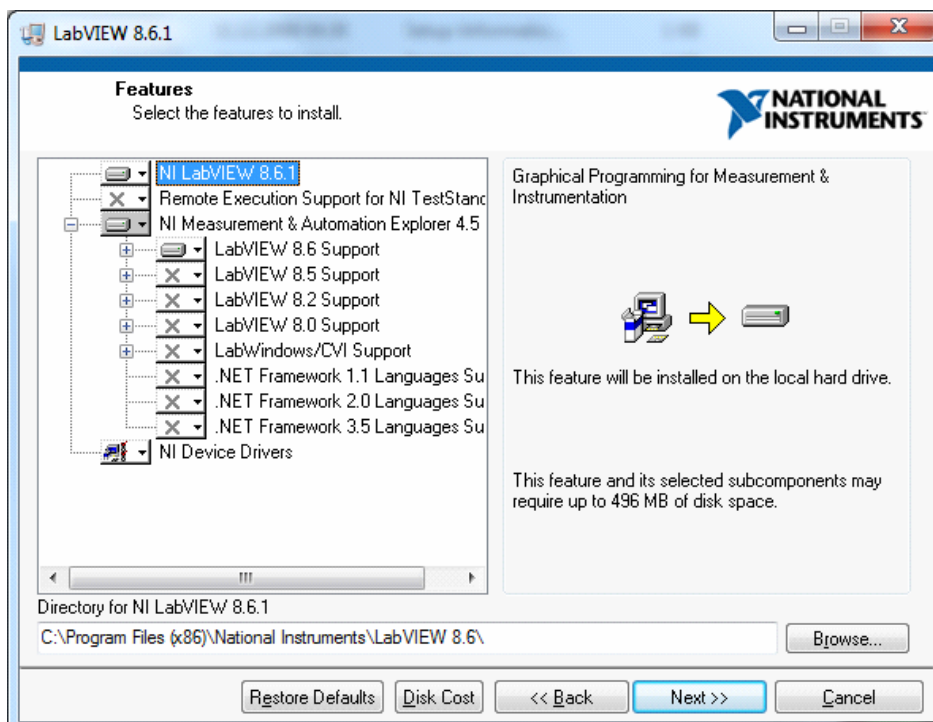
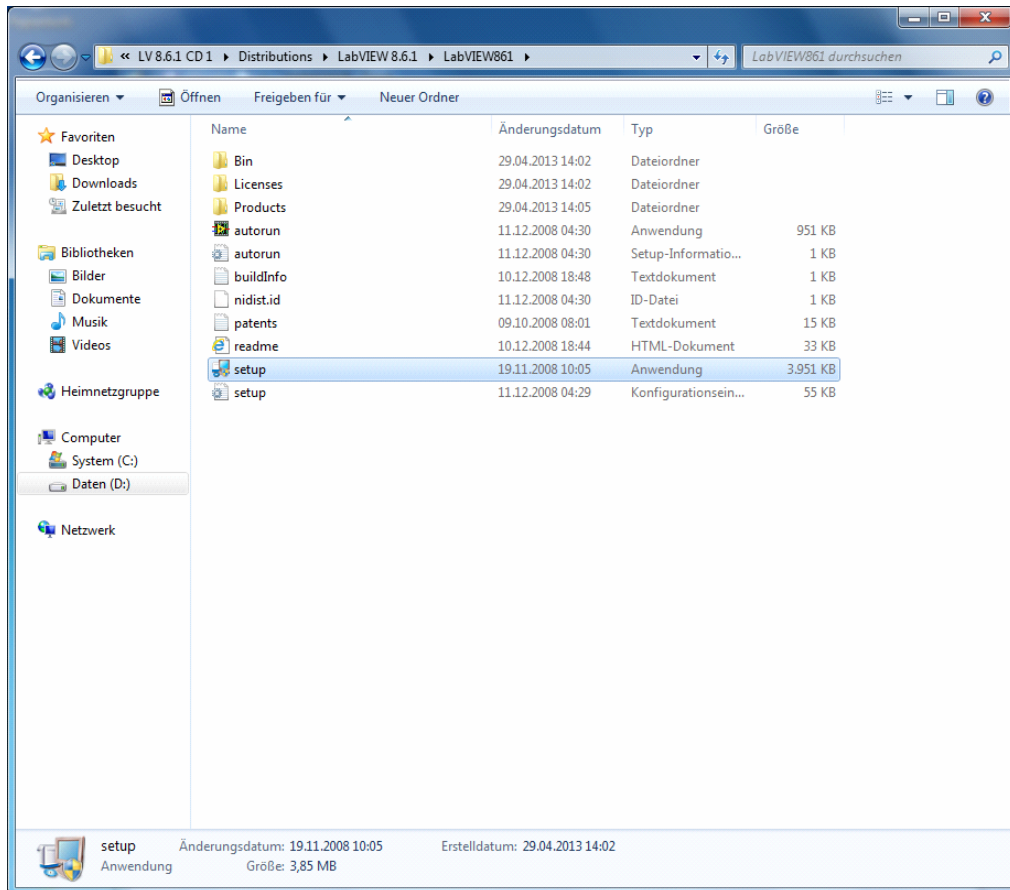
Here is a step by step instruction, what to install. We assume, that the LabView and device driver CDs are copied to a local harddrive. But it also works, if you separately install everything from a CD.

Install LabVIEW first:

Navigate to the folder containing LabVIEW and install it with setup.exe

D:\LabView installation CDs\LV 8.6.1 CD 1\Distributions\LabVIEW 8.6.1\LabVIEW861





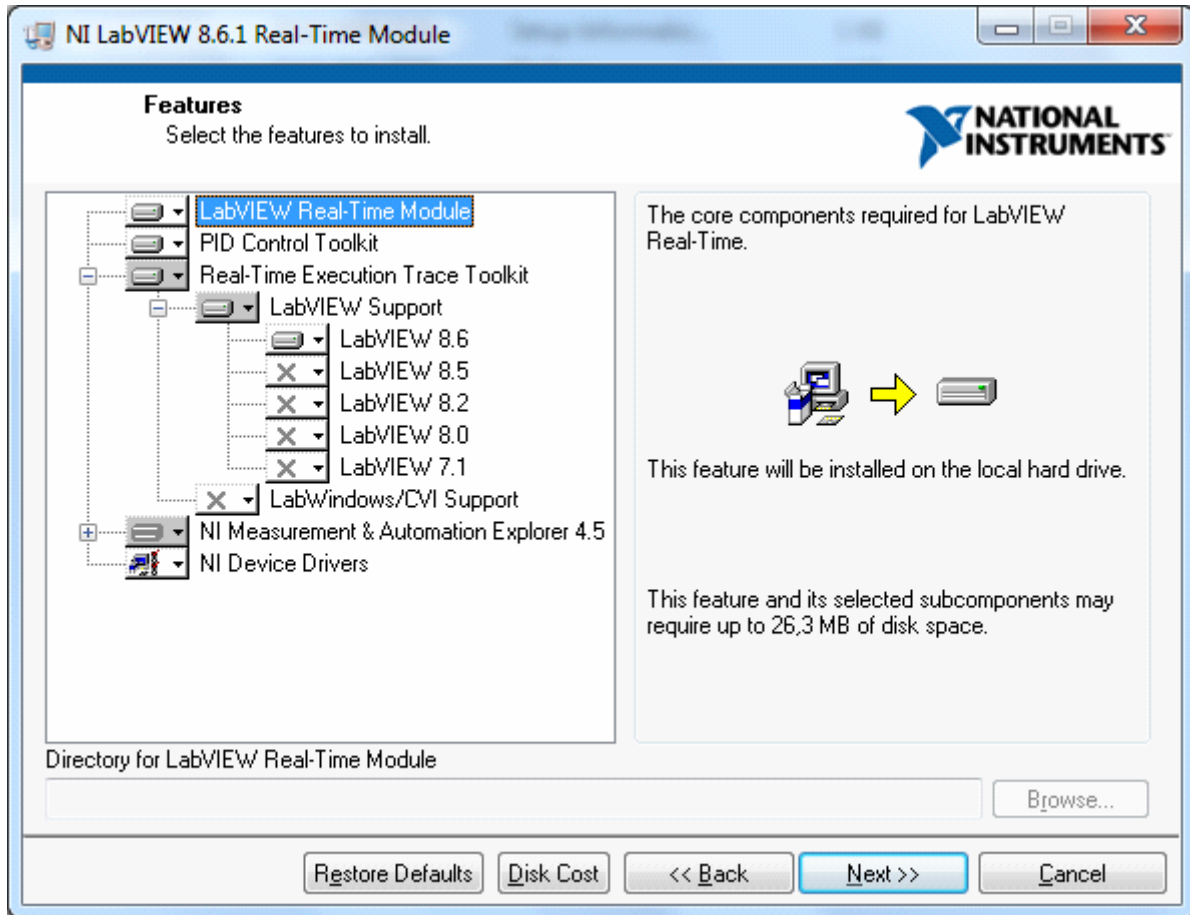
Keep the default settings in the installer.

Always **activate the products after installation** over the internet, **do not register, reboot if prompted**.

If LabView wants the **device driver CD**, click "Later". We will install device drivers at the end.

Next, install the RealTime stuff:

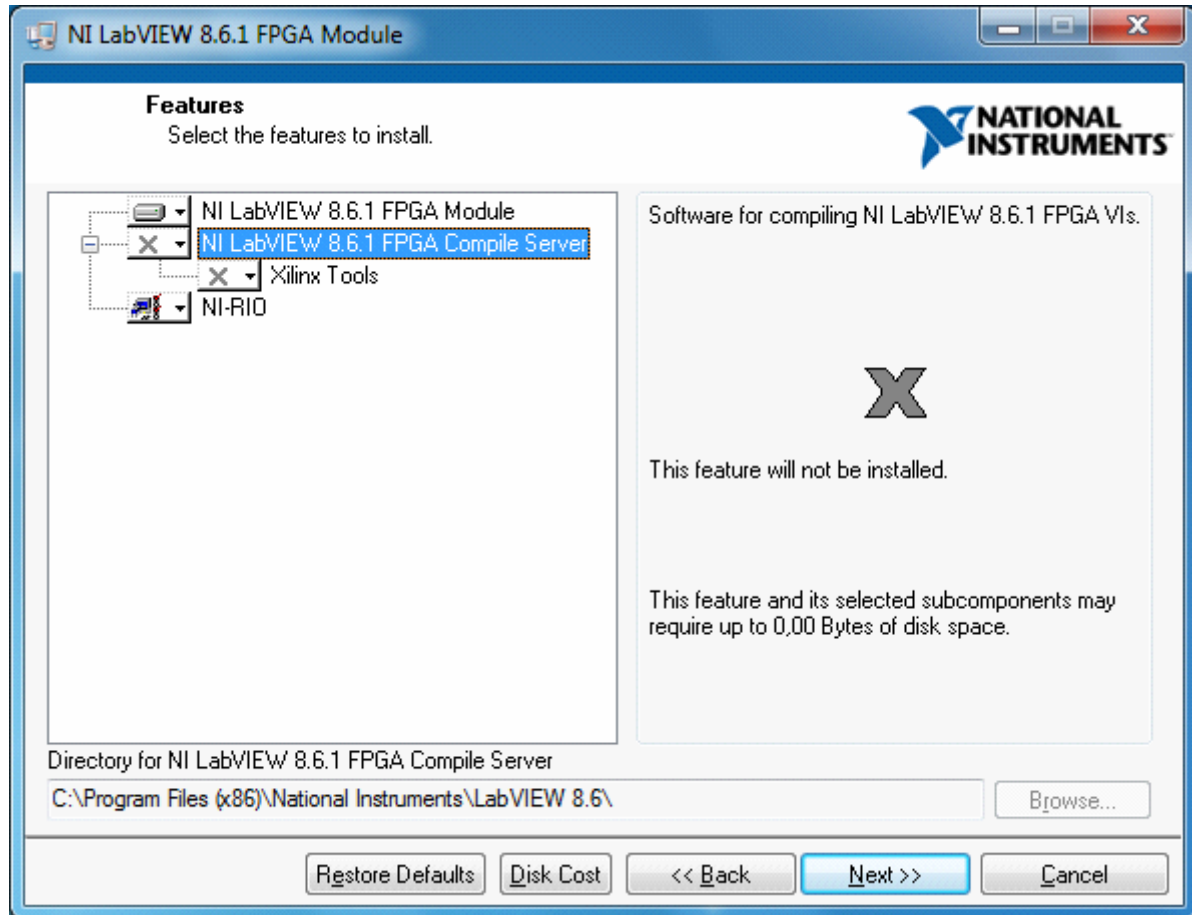
D:\LabView installation CDs\LV 8.6.1 CD 1\Distributions\Real-Time 8.6.1



Activate over internet line, do not register devices, ...

Next is FPGA stuff

D:\LabView installation CDs\LV 8.6.1 CD 1\Distributions\FPGA 8.6.1\LVFPGA861



Do not install the FPGA compile server.

Then install Vision Development:

D:\LabView installation CDs\LV 8.6.1 CD 1\Distributions\Vision Development Module 8.6
With standard options (no screenshot here)

At the end, run the setup.exe from the Device Driver CD and install these. (default options, no screenshot here)

After this, LabView is installed. You can now run the BeamView Server part. Copy the BeamViewIPC.exe file from the Common drive to your machine and execute it.

Getting AVT FireWire cameras to work

AVT FireWire Cameras may need "special treatment" to be usable in Windows 7. See this webpage:

[http://www.alliedvisiontec.com/de/support/knowledge-base.html?tx_nawavtknowledgebase_piList\[uid\]=136&tx_nawavtknowledgebase_piList\[mode\]=single](http://www.alliedvisiontec.com/de/support/knowledge-base.html?tx_nawavtknowledgebase_piList[uid]=136&tx_nawavtknowledgebase_piList[mode]=single)

The description in point 2 seems to work: Exchange the FireWire driver:

2. Alternatively, switch the default Microsoft card driver to the legacy version

OHCI Compliant IEEE 1394 Host Controller (legacy)

at device manager as shown in the following linked video:

www.youtube.com/watch

After this, open the Measurement and Automation Explorer ("Max", included with LabView) and see, if your cameras show up in the device list like this:

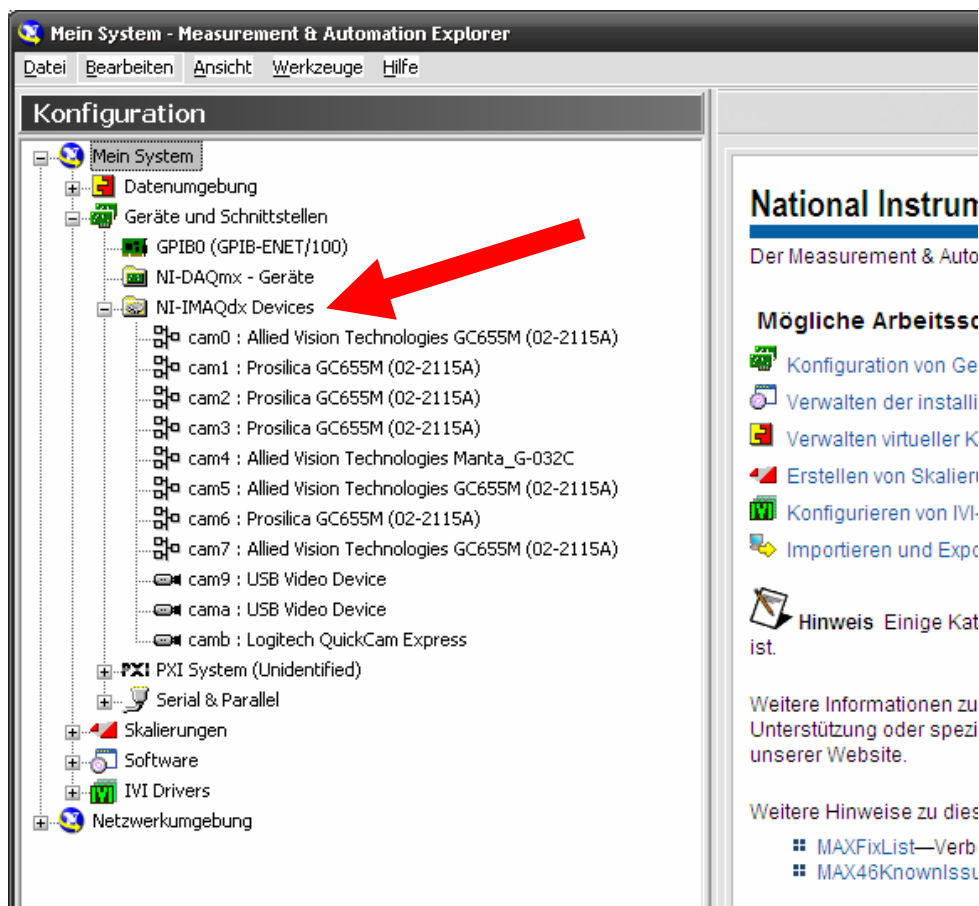


Abbildung 1: Multiple cameras unter "NI-IMAQdx"

Install the BeamView Client

Copy the latest BeamView installer from the common driver and execute it on your machine. Windows 7 has some security features which make it hard to change files in the normal "C:\Program Files" directories after installation.

Therefore **DO NOT install BeamView on the standard path** like
c:\Program Files\GSI Darmstadt\BeamView
but use some custom location, e.g.:
D:\Penny\BeamView