

User Manual

Signalwahl 1 aus 20

Schaltmatrix



Basic Functions of the Controller:

Attention: Power Up takes 60+ Seconds, more if DHCP is enabled (dependent on Server)!

Serial RS232 Port:

- Terminator: CR/DEC 13 + LF/DEC 10: example '\r\n'
- BAUD RATE: 9600
- Data Bits: 8
- Stop Bits: 1
- Parity/Flow Control: none
- 3 Pin Configuration: Rx, Tx, GND

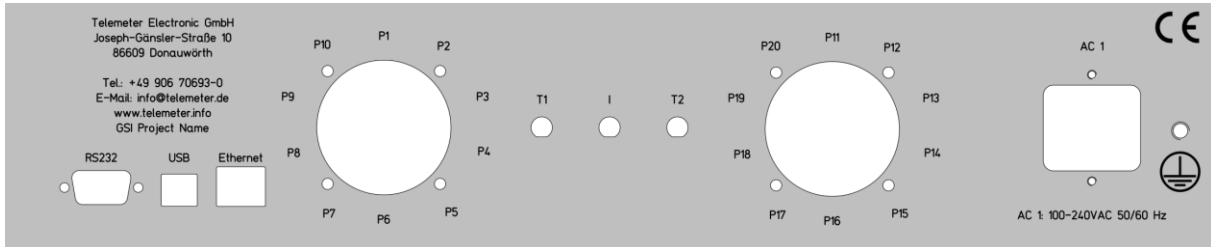
Serial USB Port: Virtual COM Port

- Terminator: CR/DEC 13 + LF/DEC 10: example '\r\n'
- BAUD RATE: 9600
- Data Bits: 8
- Stop Bits: 1
- Parity/Flow Control: none

Ethernet Port:

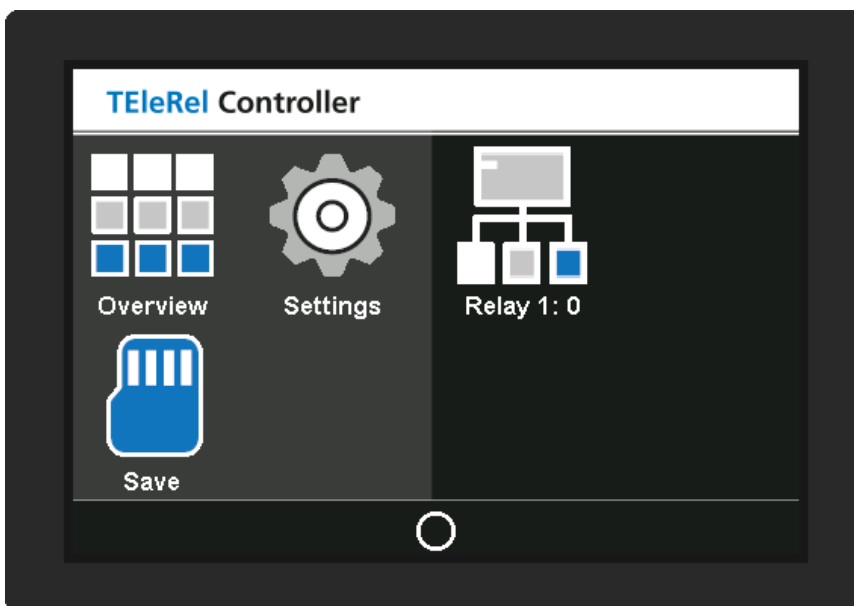
- Terminator: CR/DEC 13 + LF/DEC 10: example '\r\n'
- DHCP: disabled (preconfigured)
- IPv4: 192.168.0.250 (preconfigured)
- Port: 49152 (preconfigured)
- NI-VISA: RAW Socket
- PuTTY: RAW TCP

Input and RF Path:



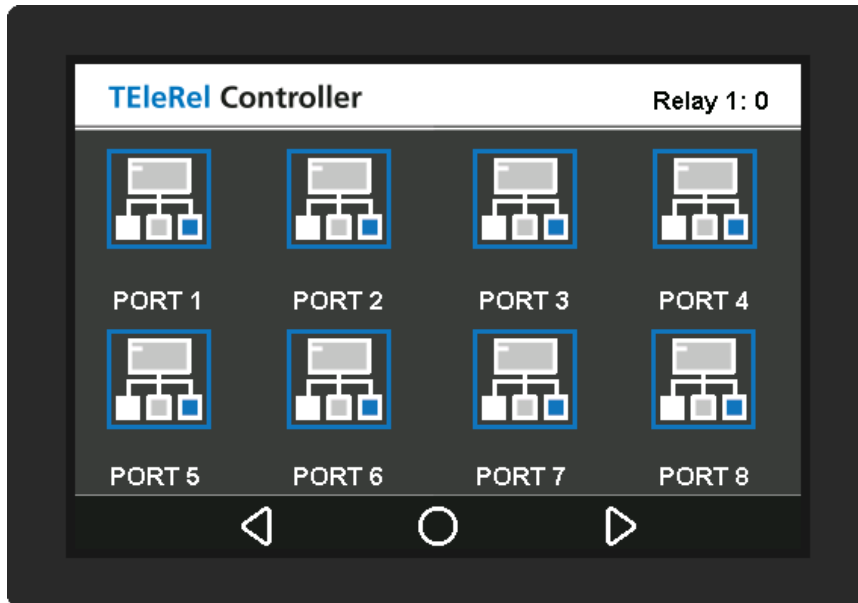
I = Common RF Input
Px = Port x RF Output

Display and Control:

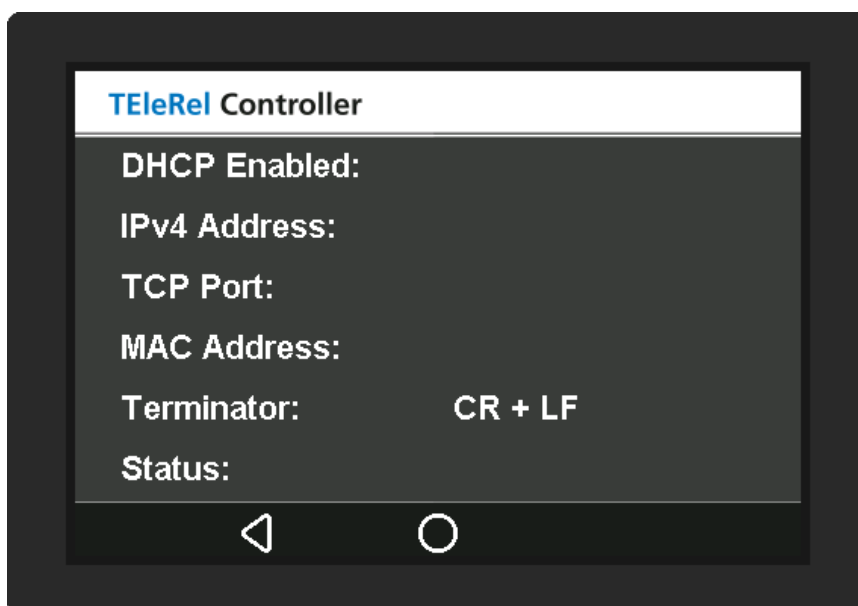


Main Menu:

- Relay 1 = Virtual 1 – 20 Relay
- Save = Save current Relay Setup
- Setting = Settings Menu
- Overview = Relay Overview Menu



RF Output Port = Port Number



Ethernet Information: **empty if the Controller is busy**

SCPI Command List:

The commands are in SCPI format and organized in groups based on their functions. Each command group has a prefix that are used by the member commands. Command must use all the uppercase letters. Lowercase letters can be ignored.

Basic Command:

Command	Description
*IDN?	Device Basic Identification .

IDN? Returns Information about Company, Product, Serial Number, Software Version, Hardware Version

Relay Output Configuration:

Prefix: RELAY:#

Command	Description	Parameter	Answer
:PORT	Sets relay port output	0 - Disable # - Enable	#RelayNumber,#Port
:PORT?	Returns current port setup		#RelayNumber,#Port
:NAME?	Return current relay name		#RelayNumber,Name
:STATus?	Return relay number, current port and name		#RelayNumber,#Port,Name

Relay Save:

Prefix: RELAY

Command	Description	Parameter	Answer
:SAVE	Save Current Relay Setup		1

Ethernet Parameters:

Prefix: SYSTem:COMMunicate:LAN

Command	Description	Parameter	Answer
:DHCP	DHCP Setup	#1 - On	#1 = On
		#0 - Off	#2 = Off
:DHCP?	Display DHCP Status		#1 = On
			#2 = Off
:IP	Set IP (e.g. 192.168.1.50)	###.###.###.###	###.###.###.###
:IP?	Returns IP Address		###.###.###.###
:MAC?	Returns ETH Hardware Address		##:##:##:##:##:##
:PORT	Sets ETH TCP Port	#0- 65535	#Port
:PORT?	Returns ETH TCP Port		#Port
:PLINK?	Returns ETH Link Status		X = unknown, 1 = link on, 0 = link off
:STATUS	Returns ETH Status		PLINK,DHCP,IP,MAC

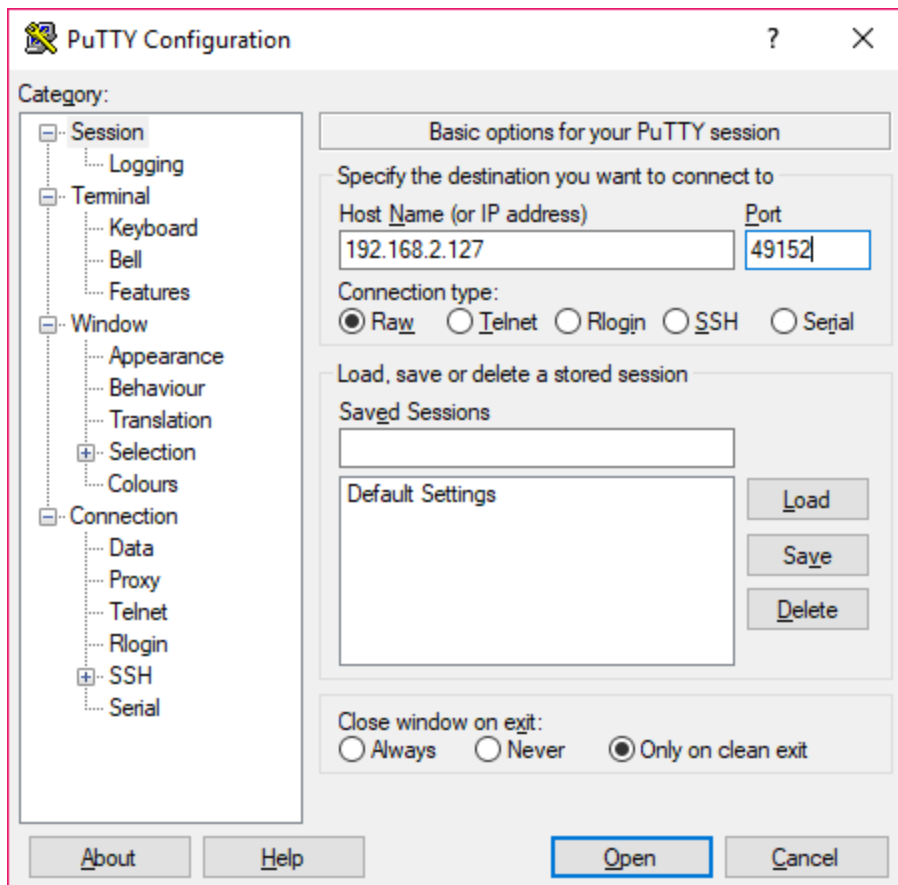
Serial Parameters:

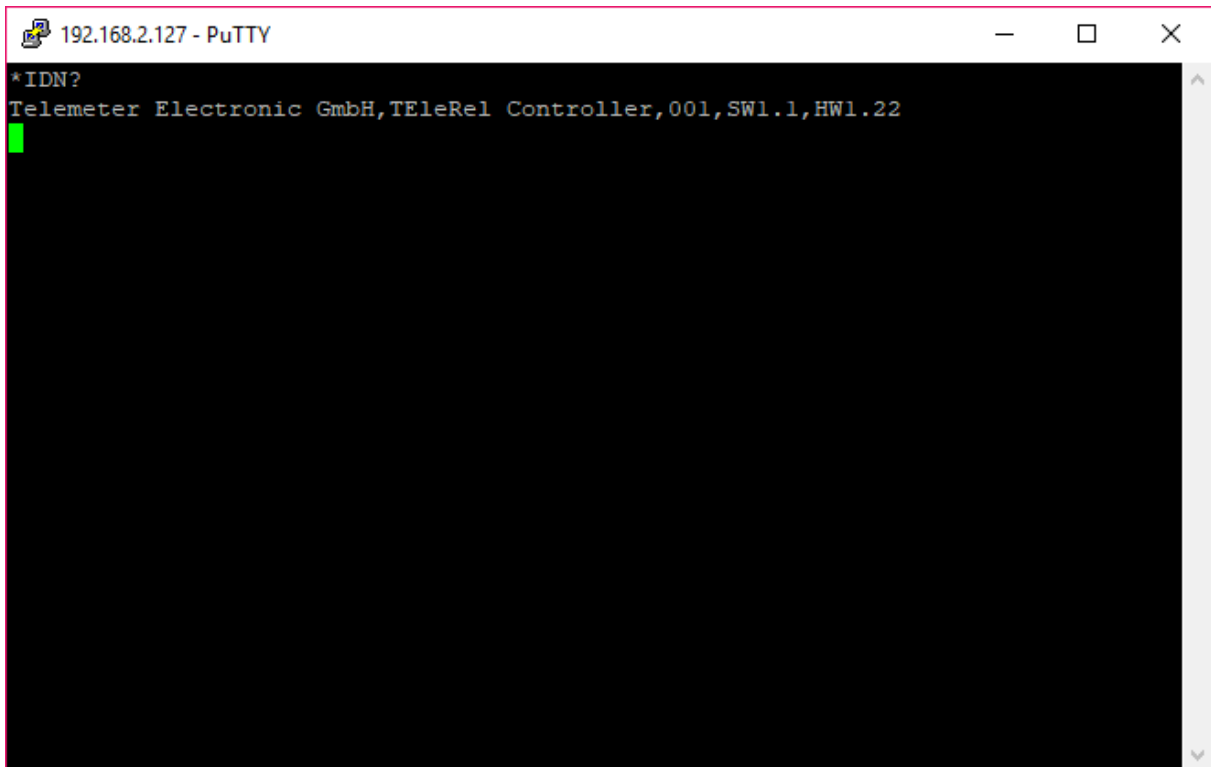
Prefix: SYSTem:COMMunicate:SERial

Command	Description	Parameter	Answer
:BAUD?	Display Baud Rate		#BAUD
:TERMinator?	Display Command Terminator		LF/DEC 10 + CR/DEC 13

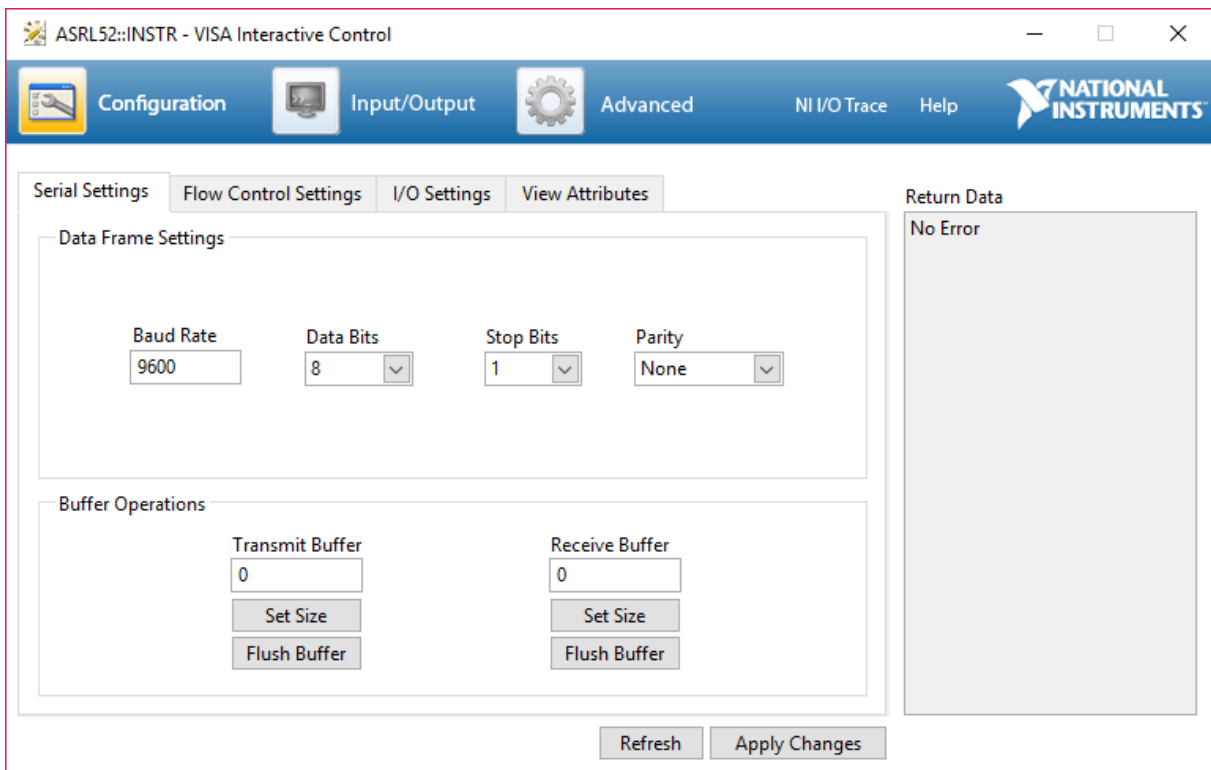
Local/Remote Parameters:

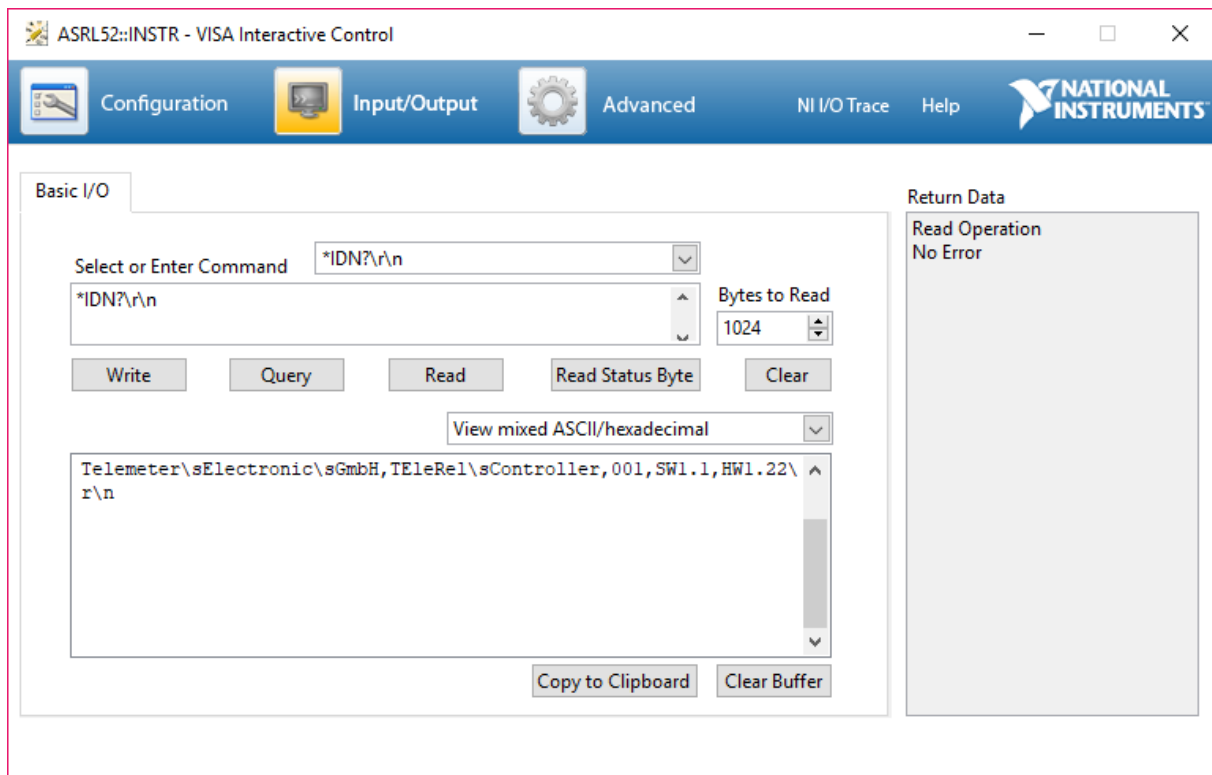
Ethernet Example:





Serial Example:





Control Example:

Switching Relay 1 to Port 4

To set the operating mode the command will be:

- RELAY:1:PORT 4

To get MAC Address:

- SYSTem: COMMunicate:LAN:MAC?